

# KIT MILES

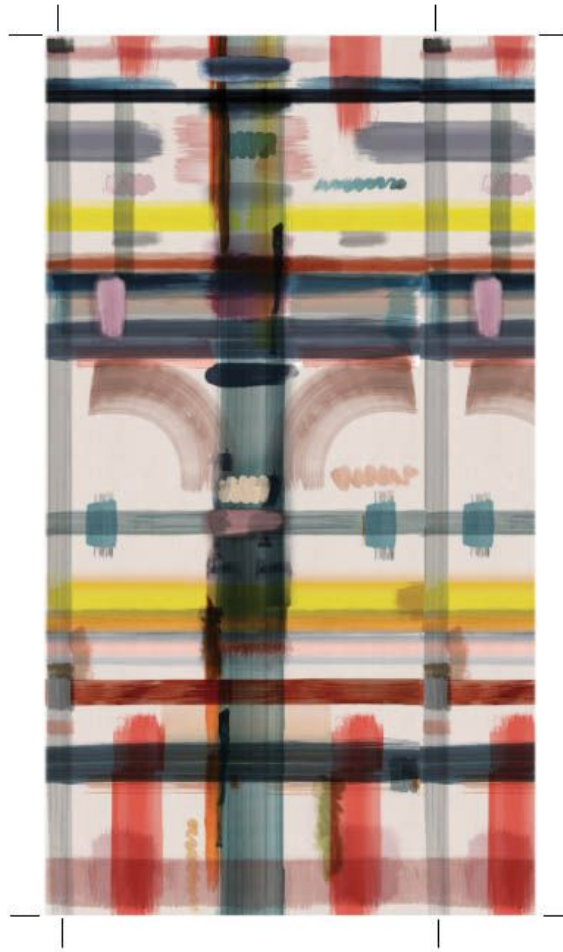



IMAGE DISPLAYS REPEAT IN TWO WIDTHS

Design Name	Corinthian Check
Product Code	Toll Coated 3332
Colour	Spring
Repeat	W 70 cm / H 162 cm   block repeat (27.5 x 63.7 inches)
Roll size	Sold by 10m roll (10.9 yards)
Care	Spongeable 
EU Fire rating	EN 13501-01:2007-Bs2,d0
Composition	Toll coated non-woven
Weight	180 gsm

# KIT MILES



## DETAIL

The Corinthian Check is designed to bring an architectural scale into the modern interior through painted marks, bringing to a room a playful and surprising geometry of colour and beautiful textures. A classical notion of proportion is rendered in a series of free and open marks painted by movement, representing the universal human need for expression.

KIT MILES

